

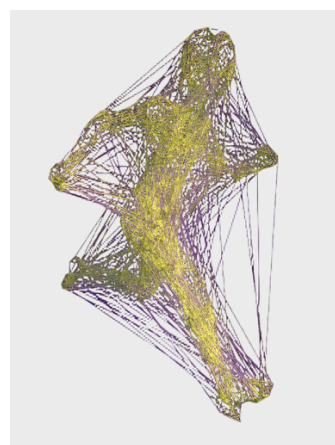


Synergetic Manual Fascial Techniques

4 CE hours in Nashville, TN – May 15, 2026 – 5:30-9:30PM

Join Structural Integrators Magnus Eklund BCSI, LMT 144, CYT, CES & Bobbi Eklund CSSI, LMT 2629, CYT

At Mind Body Institute Nashville/Madison, TN



Foundational manual fascial techniques to improve fascial stability and balance, flexibility and functional movement!

This 4-hour CE course includes PowerPoint lecture on the history, scientific research & strategies of myofascial bodywork & manual therapy demonstrations of myofascial techniques with active & passive client movement. Workshop focus is manual fascial techniques, postural & movement dysfunction, & more. Synergetic™ Myofascial Therapy includes a variety of advanced fascial therapy techniques, rocking, movement, functional assessments & stretching to solve myofascial pain and dysfunctional mobility patterns. **Magnus Eklund** BCSI, LMT 144(MS) is an Advanced Guild Structural Integration Practitioner taught by the manual therapy legend Emmett Hutchins the protégé of Dr Ida Rolf, & a KMI/AT Structural Integration Practitioner taught by Tom Myers. **Bobbi Eklund** CSSI, LMT 2629(MS) is an experienced Structural Integration teacher & certified by Dr. Sue Morter as an Energy Codes® Coach & Body Awake® Yoga teacher. Magnus & Bobbi has a combined 30 years' experience as manual therapy practitioners. This is a hands-on focused workshop with demos & student labs.

Cost: \$ 149 Preregistration before March 15, 2026 - \$179 After – register on website - **Times:** May 15, 2026, 5:30-9:30PM (Friday)

Cost: Fascial visceral 12 CE (May 16-17) and Manual Fascia 4 CE: \$ 548

Contact: Magnus (601) 500-0337- magnuse@aol.com

Location: Mind Body Institute, 1556 Crestview Drive, Madison, TN 37115 (615)-360-8554

***Note:** This workshop is not meant to substitute for traditional medical care, nor diagnose medical conditions, nor manipulate bones, but to educate LMTs on how to safely apply massage techniques on clients. if you have health concerns, please consult your healthcare provider prior to attending. We reserve the right to cancel the workshop for any reason. Magnus and Bobbi Eklund are licensed massage therapists (MS144&2629), and CE provider for massage therapy. Magnus & Bobbi Eklund are not Rolfers™, nor do they teach Rolfing™. Magnus is not affiliated with Tom Myers KMI/AT SI nor with The Guild. The Therapeutic Alternative & Magnus and Bobbi Eklund/Mind & Body Inc. are not responsible for future use of course, techniques nor any loss or injury during CE workshop. Check CE with your state board prior to sign up. Bobbi Eklund will not always be part of teaching this workshop.*

For more information & sign-up visit:
<http://www.mindandbodyinc.com/>

4 CE Approved NCBTMB 450063-06
(TN, NY, NV, NC, AL accepts NCBTMB
CE), FL/GA 50-9284, MS 29

CE Broker course # 20-1327356

NCBTMB course # 4022377

LIVE in-person CE