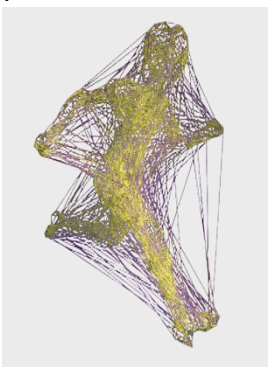




Synergetic Fascial and Visceral Integration – 12 CE Hours

**Join Structural Integrators Magnus Eklund BCSI, LMT 144 and Bobbi Eklund CSSI, LMT 2629
In Madison/Nashville, TN at Mind Body Institute October 3-4, 2026!**

Course Overview This course explores the interface between fascia and viscera — how the connective tissue matrix surrounding and suspending our organs impacts posture, mobility, breath, digestion, and emotion. Through the Synergetic Myofascial Method, practitioners will learn hands-on techniques to release fascial restrictions influencing the viscera and support deep integration from the core outward, and co-regulate movement, posture, and pain. Through the Synergetic Myofascial Method, students will learn manual and energetic approaches to unwind tension in both systems while improving body awareness, mobility, and resilience. This is ideal for practitioners ready to work beyond the muscular layer and into the integrated architecture of viscera, nerves, fascia, and energy. Goal: To provide bodyworkers with practical tools and embodied understanding to assess, unwind, and reintegrate the neck, pelvis, spine, and upper body using Synergetic Fascial visceral principles. This course integrates anatomical, functional, myofascial and energetic approaches to restore stability, mobility, and fascial and energetic flow from the head down.



Magnus is an Advanced Guild Structural Integrator taught by manual therapy legend Emmett Hutchins, whom was the protégé of Dr Ida Rolf. He studied with Tom Myers & is a KMI/AT certified Structural Integration practitioner. Magnus has worked with many professional athletes in the Olympic games, NFL players & more. **Bobbi** is an experienced Structural Integration teacher also certified by Dr. Sue Morter as an Energy Codes® Coach & Body Awake® Yoga teacher. **Magnus & Bobbi** teach Synergetic™ myofascial & Structural Integration CE in the USA. Their clinical practice is in Biloxi MS at Mind & Body Institute. They have a combined 60 yrs experience as manual therapy practitioners. This is a hands-on training with advanced fascial visceral techn.

For more information and sign-up visit: <http://www.mindandbodyinc.com/>

Approved provider: NCBTMB 450063-06 (TN & AL accepts NCBTMB CE hours), FL/GA 50-9284, NY, MS 29.

CE Broker course # 20-1324375 NCBTMB course # 4024041 - LIVE in-person CE hours

Note: This workshop is not meant to substitute for traditional medical care, nor diagnose medical conditions, nor manipulate bones, but to educate LMTs on how to safely apply massage techniques on clients. if you have health concerns, please consult your healthcare provider prior to attending. We reserve the right to cancel the workshop for any reason. Magnus and Bobbi Eklund are licensed massage therapists (MS144&2629), and CE provider for massage therapy. Magnus & Bobbi Eklund are not Rolfers™, nor do they teach Rolfig™. Magnus is not affiliated with KMI/AT SI, nor Tom Myers, nor IASI. Organizers & Magnus Eklund/Mind & Body Inc. are not responsible for future use of course techniques. Check CE with your state board prior to sign-up. Bobbi Eklund will not always teach this course.

Cost: 12 CE: \$399 pre-sign up by August 1, 2026 - \$429 after - **Cost:** 4 CE Feet (October 2: 530-930PM) & 12 CE Neural \$ 548

Times: October 3-4, 2026, 9:00AM-4:00PM (Weekend) **Contact:** Magnus (601) 500-0337 magnuse@aol.com

Location: Mind Body Institute – 1556 Crestview Dr. Madison (Nashville metro area), TN 37115 (615) 455-0632