



Synergetic Lymphatic Flow and Fascia Mobilization – 12 CE

Join Structural Integrators Magnus Eklund BCSI, LMT 144 and Bobbi Eklund CSSI, LMT 2629

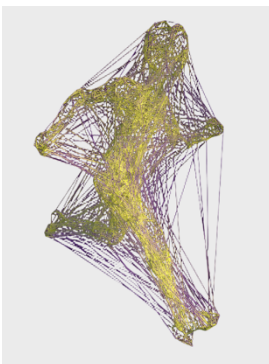
In Biloxi, MS May 8-9, 2026 at Mind Body Institute!

Restore fluid vitality and fascial openness using integrative bodywork techniques for detoxification, immune support, and pain relief.

Course Description

In this hands-on training, participants will explore the dynamic relationship between the lymphatic system and the fascial network through the lens of Synergetic fascial Therapy. Learn to gently stimulate lymphatic flow, decompress stuck fascia, and restore ease and vitality throughout the body.

Assisted stretching, breathwork, and fascial mobilization, this course offers an integrative approach to reducing inflammation, enhancing circulation, and supporting the body's natural detoxification processes. Emphasis will be placed on restoring flow through key lymphatic pathways, supporting immune health, and creating more space for energy, movement, and emotional well-being.



Magnus is an Advanced Guild Structural Integrator taught by manual therapy legend Emmett Hutchins, whom was the protégé of Dr Ida Rolf. He studied with Tom Myers & is a KMI/AT certified Structural Integration practitioner. Magnus has worked with many professional athletes in the Olympic games, NFL players & more. **Bobbi** is an experienced Structural Integration teacher also certified by Dr. Sue Morter as an Energy Codes® Coach & Body Awake® Yoga teacher. **Magnus & Bobbi** teach Synergetic™ myofascial & Structural Integration CE in the USA. Their clinical practice is in Biloxi MS at Mind & Body Institute. They have a combined 60 yrs experience as manual therapy practitioners. This is a hands-on training with advanced fascial lymphatics.

For more information and sign-up visit: <http://www.mindandbodyinc.com/>

Approved provider: NCBTMB 450063-06 (TN, AL, NY, NC, TX, NV: NCBTMB CE), FL/GA 50-9284

CE Broker course # 20-1324381 NCBTMB course # 4024042 - LIVE in-person CE hours

Note: This workshop is not meant to substitute for traditional medical care, nor diagnose medical conditions, nor manipulate bones, but to educate LMTs on how to safely apply massage techniques on clients. If you have health concerns, please consult your healthcare provider prior to attending. We reserve the right to cancel the workshop for any reason. Magnus and Bobbi Eklund are licensed massage therapists (MS144&2629), and CE provider for massage therapy. Magnus & Bobbi Eklund are not Rolfers™, nor do they teach Rolfing™. Magnus is not affiliated with KMI/AT SI, nor Tom Myers, nor IASI. Organizers & Magnus Eklund/Mind & Body Inc. are not responsible for future use of course techniques. Check CE with your state board prior to sign-up. Bobbi Eklund will not always teach this course.

Cost: 12 CE: \$425 – sign up on website, check in mail or call Magnus

Times: May 8, 2026 (FRIDAY) 5:30-9:30 PM – May 9, 2026 (SATURDAY) 9:00AM-6:00PM

Contact: Magnus (601) 500-0337 magnuse@aol.com

Location: Mind Body Institute LLC – 2628 Executive Place, Biloxi, MS 39531